



Alarm International Systems
Nice to be your partner

IPTVT6230

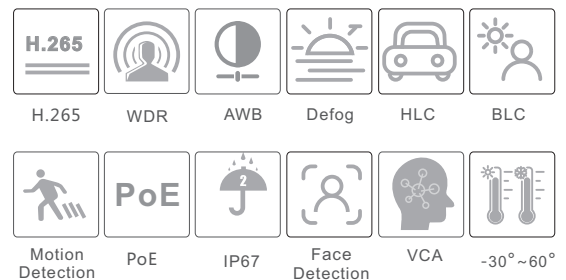


2MP Face Detection Bullet AI Network Camera

IPTVT6230

2MP Face Detection Bullet AI Network Camera

- 1080P (1920 × 1080) full real time coding
- Max. resolution: 1920 × 1080
- 30 ~ 50m white light view distance
- Motorized zoom lens
- 3D DNR, Digital WDR, HLC, BLC and ROI coding
- One CVBS output and one on-board CVBS output
- 1CH audio input and 1CH audio output;
Hardware reset Built-in micro SD card slot, up to 128GB
- 1CH alarm input; 1CH alarm output; RS485
- DC12V/AC24V/PoE power supply
- Support smart phone, iPad, remote monitoring
- P2P function optional; IP67 ingress protection
- Support three streams





IPTVT6230

2MP Face Detection Bullet AI Network Camera

- 1080P (1920 × 1080) full real time coding
- Max. resolution: 1920 × 1080
- 30 ~ 50m white light view distance
- Motorized zoom lens
- 3D DNR, Digital WDR, HLC, BLC and ROI coding
- One CVBS output and one on-board CVBS output
- 1CH audio input and 1CH audio output;
- Hardware reset Built-in micro SD card slot, up to 128GB
- 1CH alarm input; 1CH alarm output; RS485
- DC12V/AC24V/PoE power supply
- Support smart phone, iPad, remote monitoring
- P2P function optional; IP67 ingress protection
- Support three streams
- Smart Analytics: object removal detection, abnormal video signal detection, line crossing detection, ...

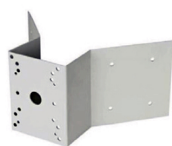
AVAILABLE ACCESSORIES

ACTVT912



Junction Box

ACTVT950



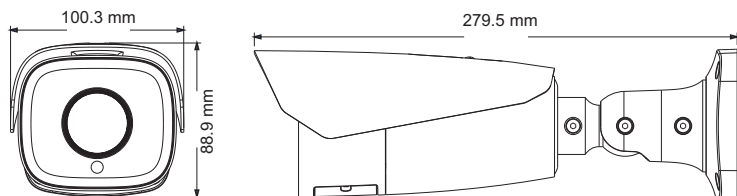
Corner Mount

ACTVT940



Pole Mount

DIMENSIONS



Specifications	Model	IPTVT6230
Camera		
Image Sensor		1 / 2.8 "CMOS
Image Size		1920 × 1080
Electronic Shutter		1 / 25 s ~ 1 / 100000 s
Iris Type		Fixed Iris
Min. Illumination		0 lux
Lens		7~22mm@F1.4, horizontal FoV: 37°~22.5°; recommended face capturing distance: 5~15m
Lens Mount		Φ14
Wide Dynamic Range		Digital WDR
BLC		Yes
HLC		Yes
Defogging		Yes
Digital NR		3D DNR
Angle Adjustment		Pan: 0°~360°; Tilt:0°~90°; Rotation: 0°~360°
Image		
Video Compression		H.265 / H.264 / MJPEG
H.264 Compression Standard		Baseline Profile/Main Profile/High Profile
Resolution		1080P (1920 × 1080), 720P (1280 × 720), D1, CIF, 480 × 240
Main Stream		60Hz : 1080P/ 720P (1 ~ 30fps); 50Hz : 1080P/ 720P (1 ~ 25fps)
Sub Stream		60Hz : D1/CIF (1~30fps); 50Hz:D1/CIF (1~25fps)
Third Stream		60Hz : CIF/480x240 (1~30fps); 50Hz: CIF/480x240 (1~25fps)
Bit Rate		128 Kbps ~ 6 Mbps
Bit Rate Type		VBR / CBR
Image Settings		ROI, Saturation, Brightness, Chroma, Contrast, Wide Dynamic, Sharpen, NR, etc. adjustable through client software or web browser
ROI		Each ROI to be configured separately
Interfaces		
Network		RJ45
Video Output		CVBS output (BNC × 1); one on-board CVBS output
Audio		1CH audio input; 1CH audio output
Storage		Built-in micro SD card slot, up to 128GB
Hardware Reset		Yes
RS 485		Yes
Alarm		1CH alarm input; 1CH alarm output
Functions		
Remote Monitoring		Web browsing, CMS remote control
Online Connection		Support simultaneous monitoring for up to 6 users; Support multi-stream real time transmission
Network Protocol		Ipv4, Ipv6, UDP, DHCP, NTP, RTSP, PPPoE, DDNS, SMTP, FTP, SNMP, 802.1x, UPnP, HTTPs, QoS
Interface Protocol		ONVIF
Storage		Network remote storage; micro SD card storage
Smart Alarm		Motion detection; Sensor alarm; SD card full; SD card error; IP conflict; Network disconnection
Intelligent Analytics		Object removal detection, regional intrusion detection, abnormal video detection, line crossing detection, people intrusion, people counting, crowd density, face detection (optional)
General function		Watermark, IP address filtering, video mask, heartbeat, password protection
PoE		Yes (802.3af)
LED View Distance		30 ~ 50 m
Ingress Protection		IP67
Face Detection		
Face Detection		Pupil distance of a facial image over 20 pixel can be detected
Face Capturing		By precision detecting, tracing, capturing, scoring and screening the moving faces to get the most effective face snapshots

